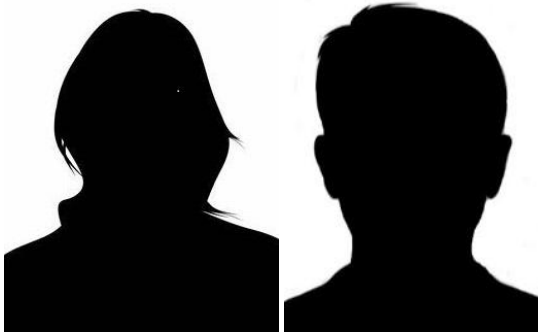


CINDY'S CORNER 0-59er GAME
6 Tables - Tuesday, December 8, 1:40 pm

[Click HERE for all results from Cindy's Corner games.](#)



Overall Winners (A1) - 71.67%
1st Place E/W (A1)
Substitutes



Overall Winners (B1) - 65.00%
1st Place E/W (B1)
Ann Hopkins & Joslin Davis



Overall Winners (C1) - 51.11%
1st Place N/S (C1)
Leslie Hawkins & Prudy Yates



1st Place N/S (A1) (B1) - 56.11%
Jean Minton & Suzie Lambeth



1st Place E/W (C1) - 37.44%
Michael Saintsing & Carolyn Friedman